



# SPRING 2025

COURSE  
SCHEDULES





Call or text **Clovis Community College** at **575.479.5006** or email **recruitment@clovis.edu** to set up your personalized journey today.

### **STEP 1: APPLY FOR ADMISSION**

Visit **clovis.edu/apply** to apply online or fill out an application on campus. Send all official transcripts to **admissions@clovis.edu**.

### **STEP 2: COMPLETE FINANCIAL AID**

Go to **studentaid.gov** to complete the Free Application for Federal Student Aid (FAFSA). For more information on financial aid or scholarships, call **575.769.4060** or email **finaid@clovis.edu**.

### **STEP 3: CONNECT WITH CAREER SERVICES**

Unsure of what to study? Meet with the Career Services Coordinator to complete the Career Interest Inventory. Call **575.769.4085** or email **career.services@clovis.edu** to schedule an appointment.

### **STEP 4: MEET WITH YOUR ADVISOR**

Advisors can help interpret placement scores, evaluate transcripts from other schools and assist in selecting classes for the upcoming semester. Call **575.769.4020** or email **academic.advising@clovis.edu** to schedule an appointment.

### **STEP 5: MAKE PAYMENT ARRANGEMENTS**

For more information regarding payment, please contact the Business Office at **575.769.4035** or visit **clovis.edu/payment**.

### **STEP 6: GET YOUR STUDENT ID**

Say cheese! Once payment arrangements have been made, obtain a student ID card by visiting Campus Security. Your student ID is needed at the library, gym, computer labs, and more!

Clovis Community College... Ignite Your Future!

## IMPORTANT DATES

Spring Registration begins  
**November 4, 2024.**

Senior Citizen registration begins on  
**November 5, 2024** and ends on the last day  
of registration for the term listed below.

Classes start **January 21, 2025.**

Extended Hours **January 7, 9 and 15.** Open  
until **7:00 pm.**

Super Saturday Registration: **January 11,**  
from **10:00 am to 3:00 pm.**

### Classes Begin/End

Regular 16-week term . . . . . January 21 - May 16  
First 8-week term . . . . . January 21 - March 14  
Second 8-week term . . . . . March 24 - May 16

### Last day to register, add, or drop a class or change from audit to credit

Regular 16-week term . . . . . January 27  
First 8-week term . . . . . January 27  
Second 8-week term . . . . . March 28

### Last day to change from credit to audit

Regular 16-week term . . . . . March 14  
First 8-week term . . . . . February 14  
Second 8-week term . . . . . April 18

### Last day to withdraw from a class

Regular 16-week term . . . . . April 11  
First 8-week term . . . . . February 28  
Second 8-week term . . . . . May 2  
(Workshops: before the first meeting)

### Finals Week:

You may have a different class meeting time during Finals  
Week. Please check your course syllabus for details.

### Holiday Closures (Campus Closed)

Martin Luther King Jr. Holiday . . . . . January 20  
Spring 2025 Skillfest . . . . . March 7  
Spring Break . . . . . March 17 - 21

### Ceremony

Rad Tech Pinning Ceremony . . . . . May 15  
Nurses' Pinning Ceremony . . . . . May 15  
Spring Graduation Ceremony . . . . . May 16

### Graduation Application Deadline

Spring Diploma/Certificate . . . . . March 14

### Refund Schedule

Full refund of tuition and fees will be issued on canceled  
classes. Refunds are processed after registration closes  
and financial aid is complete and will be mailed to students  
approximately four weeks after registration closes.

If you have any questions, contact the Business Affairs  
Office at [575.769.4132](tel:575.769.4132) or see [www.clovis.edu/fees](http://www.clovis.edu/fees).  
Students who drop a workshop must notify the Business  
Affairs Office to begin the refund process.

### Regular 16-Week Term

January 21 - February 4 . . . . . 100% refund  
February 5 - May 16 . . . . . 0% refund

### First 8-Week Term

January 21 - 28 . . . . . 100% refund  
January 29 - March 14 . . . . . 0% refund

### Second 8-Week Term

March 15 - 28 . . . . . 100% refund  
March 29 - May 16 . . . . . 0% refund

### Workshops

Before the first meeting . . . . . 100% refund

### Final Exams

Regular 16-week term . . . . . May 12 - 16  
First 8-week term . . . . . March 10 - 14  
Second 8-week term . . . . . May 12 - 16

This class schedule is subject to change after publication. Please check for  
changes with the Academic Advising Office or the CCC website for the most up-to-  
date course information. Consumer information for Clovis Community College,  
including our graduation rates, the median debt of students completing programs,  
and other important information, can be found at: [clovis.edu/consumerinfo](http://clovis.edu/consumerinfo).



# CLOVIS COMMUNITY COLLEGE COURSE MODELS AT-A-GLANCE

## WHERE



BRICK-AND-MORTAR



VIRTUAL LEARNING ENVIRONMENT

## WHEN



AT A SCHEDULED TIME



AT STUDENT'S OWN TIME  
Assignment deadlines determined by instructor

## HOW



ON-SITE CLASSROOM TECHNOLOGY



MOBILE TECHNOLOGY

## Clovis Community College

Course Modes Info-graphic Text Description.

### WHERE

1. On Campus - at Clovis Community College
2. Online - Virtual Learning Environment

### WHEN

1. Live - at a designated, scheduled time
2. Online - at the student's own time

### HOW

1. On-site Classroom Technology
2. Mobile Technology (home computer, mobile phone, laptop)

## Course Model Descriptions

### On Campus

- Where: All class time spent on CCC campus
- When: Live, at a designated, scheduled time
- How: Using on-site classroom technology

### Live Online

- Where: All class time spent in a virtual learning environment
- When: Live, at a designated, scheduled time
- How: Using mobile technology

### Fully Online

- Where: All class time spent in a virtual learning environment
- When: Online, at the student's own time (assignment deadlines specified by instructor)
- How: Using mobile technology

### Hybrid

- Where: Portion of the course is spent on campus, and portion is spent online in a virtual learning environment
- When: Class time occurs with a mix of designated, scheduled time and work at the student's own time
- How: Using both on-site classroom and mobile technology

### Mixed

Instructor defines the mode; Student decides how to participate

- On Campus - at a designated, scheduled time
- Live Online - at a designated, scheduled time
- Fully Online - completed on the student's own time (assignment deadlines specified by instructor)

## ON CAMPUS



## LIVE ONLINE



## FULLY ONLINE



## HYBRID | Both Required

### ON CAMPUS



### ONLINE



## MIXED | Student decides based on modes defined by instructor

### ON CAMPUS



OR

### LIVE ONLINE



OR

### FULLY ONLINE



**Accounting**

CRN	SUBJ	NUM	SEC	HRS	TITLE	DAYS	TIME	INSTRUCTOR	FEES	COURSE MODE OPTIONS			
										ON CAMPUS	LIVE ONLINE	ONLINE	HYBRID
11853	ACCT	2110	101	4	Principles of Accounting I	MW	12:00 pm-1:40 pm	Turner, Monica		x			
11854	ACCT	2110	1N0	4	Principles of Accounting I		ONLINE	Turner, Monica	\$50			x	
11855	ACCT	2120	1N0	4	Principles of Accounting II		ONLINE	Turner, Monica	\$50			x	
12220	ACCT	2410	1E0	3	Personal Tax Preparation			Turner, Monica; Reed, Melissa		x			
					1/13-1/17	M-F	5:00 pm - 9:00 pm						
					1/18	S	8:00 am - 5:00 pm						

Twenty hours of tax preparation required February through April 2025. For more information, please call Monica Turner at 575.769.4948 or Melissa Reed at 575.769.4967.

**Agronomy**

CRN	SUBJ	NUM	SEC	HRS	TITLE	DAYS	TIME	INSTRUCTOR	FEES	COURSE MODE OPTIONS			
										ON CAMPUS	LIVE ONLINE	ONLINE	HYBRID
12461	AGRO	1110C	1N0	4	Intro to Plant Science/Lab		ONLINE	Gilcrest, Jody	\$50			x	

**Animal Science**

CRN	SUBJ	NUM	SEC	HRS	TITLE	DAYS	TIME	INSTRUCTOR	FEES	COURSE MODE OPTIONS			
										ON CAMPUS	LIVE ONLINE	ONLINE	HYBRID
12371	ANSC	1120C	1N0	4	Intro to Animal Science/Lab		ONLINE	Gilcrest, Jody	\$50			x	

**Anthropology**

CRN	SUBJ	NUM	SEC	HRS	TITLE	DAYS	TIME	INSTRUCTOR	FEES	COURSE MODE OPTIONS			
										ON CAMPUS	LIVE ONLINE	ONLINE	HYBRID
11856	ANTH	1140	1N0	3	Intro to Cultural Anthropology		ONLINE	Schipani, Alexandra	\$50			x	
11857	ANTH	1180	1N0	3	The Dawn of Humanity		ONLINE	Schipani, Alexandra	\$50			x	

**Art History**

CRN	SUBJ	NUM	SEC	HRS	TITLE	DAYS	TIME	INSTRUCTOR	FEES	COURSE MODE OPTIONS			
										ON CAMPUS	LIVE ONLINE	ONLINE	HYBRID
12608	ARTH	1110	1B0	3	Art Appreciation	T	1:30 pm-2:45 pm	Longhofer, Michael	\$25				x
11863	ARTH	1110	1N0	3	Art Appreciation		ONLINE	Anderson, Marsha	\$50			x	

## Art Studio

CRN	SUBJ	NUM	SEC	HRS	TITLE	DAYS	TIME	INSTRUCTOR	FEES	COURSE MODE OPTIONS			
										ON CAMPUS	LIVE ONLINE	ONLINE	HYBRID
12515	ARTS	1240	101	3	Design I	TR	10:30 am-11:45 am	Longhofer, Michael		x			
11870	ARTS	1340	101	3	Functional Ceramics I	T	6:00 pm-8:30 pm	Wright, William	\$30	x			
12402	ARTS	1520	1Z0	3	Digital Media I	TR	1:30 pm-2:45 pm	Hurlebusch, Judith	\$25	x	x	x	
12375	ARTS	1530	1N0	3	Digital Media II		ONLINE	Hurlebusch, Judith	\$50			x	
11866	ARTS	1630	101	3	Painting I	W	1:30 pm-4:00 pm	Longhofer, Michael		x			
12376	ARTS	2120	1Z0	3	Graphic Design I	TR	10:30 am-11:45 am	Hurlebusch, Judith	\$25	x	x	x	
12640	ARTS	2410	101	3	Black & White Photography		9:00 am-11:30 am	TBA		x			
<i>ARTS 2410 classes require 35mm or medium format manual camera of any manufacturer. Must be capable of manual control of focus, shutter speed, and aperture. The camera must have a built-in metering system or student must have a handheld light meter for judging exposure. For more information, please call Michael Longhofer at 575.769.4957 or 575.769.4932.</i>													
11860	ARTS	2610	101	3	Drawing II	MW	10:30 am-11:45 am	Longhofer, Michael		x			

## Automotive Technology

CRN	SUBJ	NUM	SEC	HRS	TITLE	DAYS	TIME	INSTRUCTOR	FEES	COURSE MODE OPTIONS			
										ON CAMPUS	LIVE ONLINE	ONLINE	HYBRID
10472	AT	100	101	4	Intro to Auto Electronics	MW	2:00 pm-3:40 pm	Blair, Paul	\$50	x			

Other than the Automotive classes listed above the full-time Automotive Technology program runs Monday - Thursday from 7 a.m. to 12:15 p.m. To apply students should call 575.769.4945 or stop by Room 403. Students must complete AT 100 with a C or better, complete an OT application, and meet the Accuplacer score requirements prior to being accepted into the program. Applications are now being accepted for Spring 2025.

## Biology

CRN	SUBJ	NUM	SEC	HRS	TITLE	DAYS	TIME	INSTRUCTOR	FEES	COURSE MODE OPTIONS			
										ON CAMPUS	LIVE ONLINE	ONLINE	HYBRID
11888	BIOL	1110C	1N0	4	General Biology Lecture/Lab		ONLINE	Sloan, Nancy	\$50			x	
11889	BIOL	1130C	1N0	4	Intro Anat/Phys Lec/Lab NonMaj		ONLINE	Hughes, Michelle	\$50			x	
11891	BIOL	2210C	101	4	Human Anat/Phys I Lec/Lab	TR	12:00 pm-2:30 pm	Kuykendall, Todd	\$20	x			
11893	BIOL	2210C	102	4	Human Anat/Phys I Lec/Lab	MW	6:00 pm-8:30 pm	Minteer, Allison	\$20	x			
11897	BIOL	2210C	1N0	4	Human Anat/Phys I Lec/Lab		ONLINE	Buller, Karl	\$50			x	
12641	BIOL	2225C	101	4	Human Anat/Phys II Lec/Lab	TR	9:00 am-11:30 am	Kuykendall, Todd	\$20	x			
11900	BIOL	2225C	103	4	Human Anat/Phys II Lec/Lab	TR	6:00 pm-8:30 pm	Minteer, Allison	\$20	x			
11901	BIOL	2225C	1N0	4	Human Anat/Phys II Lec/Lab		ONLINE	Hughes, Michelle	\$50			x	
11902	BIOL	2310C	101	4	Microbiology Lecture/Lab	MW	12:00 pm-2:30 pm	Hughes, Michelle	\$20	x			
11903	BIOL	2310C	102	4	Microbiology Lecture/Lab	TR	6:00 pm-8:30 pm	Hughes, Michelle	\$20	x			
11905	BIOL	2310C	1N0	4	Microbiology Lecture/Lab		ONLINE	Hughes, Michelle	\$50			x	
12587	BIOL	2410C	1N0	4	Principles of Bio:Genetics/Lab		ONLINE	Roberts, Cory	\$50			x	
12614	BIOL	2610C	101	4	Prin of Bio: Biodiv, Eco & Evo	MW	9:00 am-11:30 am	Kuykendall, Todd	\$20	x			

## Business Administration

CRN	SUBJ	NUM	SEC	HRS	TITLE	DAYS	TIME	INSTRUCTOR	FEES	COURSE MODE OPTIONS			
										ON CAMPUS	LIVE ONLINE	ONLINE	HYBRID
11906	BUSA	1110	101	3	Introduction to Business	TR	10:30 am-11:45 am	Reed, Melissa		x			
11907	BUSA	1110	1N0	3	Introduction to Business		ONLINE	Reed, Melissa	\$50			x	
12237	BUSA	2110	1N0	3	Business Communications		ONLINE	Schmidt, Michelle	\$50			x	
12224	BUSA	2999	1N0	2	Programmatic Capstone		ONLINE	Kuykendall, Reed, Turner	\$50			x	

## Business Computer Information Systems

CRN	SUBJ	NUM	SEC	HRS	TITLE	DAYS	TIME	INSTRUCTOR	FEES	COURSE MODE OPTIONS			
										ON CAMPUS	LIVE ONLINE	ONLINE	HYBRID
12128	BCIS	1110	101	3	Fund of Info Literacy/Systems	T	6:00 pm-8:30 pm	Byers, Diana		x			
12129	BCIS	1110	102	3	Fund of Info Literacy/Systems	MW	10:30 am-11:45 am	Byers, Diana		x			
12130	BCIS	1110	1N0	3	Fund of Info Literacy/Systems		ONLINE	Byers, Diana	\$50			x	

BCIS 1110 covers the Microsoft Office 2019/Office 365 Windows versions of Word, Excel, Access, and PowerPoint.

## Business Finance

CRN	SUBJ	NUM	SEC	HRS	TITLE	DAYS	TIME	INSTRUCTOR	FEES	COURSE MODE OPTIONS			
										ON CAMPUS	LIVE ONLINE	ONLINE	HYBRID
11909	BFIN	2110	1N0	3	Introduction to Finance		ONLINE	Walley, Katrina	\$50			x	

## Business Law

CRN	SUBJ	NUM	SEC	HRS	TITLE	DAYS	TIME	INSTRUCTOR	FEES	COURSE MODE OPTIONS			
										ON CAMPUS	LIVE ONLINE	ONLINE	HYBRID
11908	BLAW	2110	1N0	3	Business Law I		ONLINE	Talbert, Laura	\$50			x	

## Chemistry

CRN	SUBJ	NUM	SEC	HRS	TITLE	DAYS	TIME	INSTRUCTOR	FEES	COURSE MODE OPTIONS			
										ON CAMPUS	LIVE ONLINE	ONLINE	HYBRID
11913	CHEM	1120C	1N0	4	Intro to Chem Lec/Lab Non-Maj		ONLINE	Woodruff, Julia	\$50			x	
11915	CHEM	1215C	1N0	4	Gen Chem I Lec/Lab for STEM		ONLINE	Morley, Deena	\$50			x	
12382	CHEM	1225C	1N0	4	Gen Chem II Lec/Lab for STEM		ONLINE	Morley, Deena	\$50			x	

## Communication

CRN	SUBJ	NUM	SEC	HRS	TITLE	DAYS	TIME	INSTRUCTOR	FEES	COURSE MODE OPTIONS			
										ON CAMPUS	LIVE ONLINE	ONLINE	HYBRID
12383	COMM	1130	101	3	Public Speaking	MW	9:00 am-10:15 am	Knight, Kelsey		x			
12615	COMM	1130	102	3	Public Speaking	TR	10:30 am-11:45 am	Thomas, Celeste		x			
11924	COMM	1130	1N0	3	Public Speaking		ONLINE	Knight, Kelsey	\$50			x	
12387	COMM	2120	101	3	Interpersonal Communication	MW	10:30 am-11:45 am	Thomas, Celeste		x			
12478	COMM	2120	102	3	Interpersonal Communication	TR	9:00 am-10:15 am	Knight, Kelsey		x			
11920	COMM	2120	1N0	3	Interpersonal Communication		ONLINE	Thomas, Celeste	\$50			x	
12334	COMM	2120	1N1	3	Interpersonal Communication		ONLINE	Knight, Kelsey	\$50			x	

## Computer Information Systems

CRN	SUBJ	NUM	SEC	HRS	TITLE	DAYS	TIME	INSTRUCTOR	FEES	COURSE MODE OPTIONS			
										ON CAMPUS	LIVE ONLINE	ONLINE	HYBRID
10090	CIS	101	1N0	3	Fund of Computer Concepts		ONLINE	Byers, Diana	\$50			x	
12479	CIS	103	101	4	Config Cisco Devices Inter Rou	T	6:00 pm-9:15 pm	Walker, Raymond		x			
11576	CIS	125	1N0	3	Intro to Programming Concepts		ONLINE	Davis, Terry	\$50			x	
10734	CIS	134	1N0	4	Computer Hardware / Software		ONLINE	Walker, Raymond	\$50			x	
10735	CIS	135	1N0	4	Network Fund for Network+		ONLINE	TBA	\$50			x	



## Computer Information Systems (Continued)

CRN	SUBJ	NUM	SEC	HRS	TITLE	DAYS	TIME	INSTRUCTOR	FEES	COURSE MODE OPTIONS			
										ON CAMPUS	LIVE ONLINE	ONLINE	HYBRID
10104	CIS	140	1N0	3	Intro to Word Processing		ONLINE	Byers, Diana	\$50			X	
<i>*CIS 140 will be taught using the Microsoft Office 2019/Office 365 Windows versions of Word.</i>													
10105	CIS	150	1N0	3	Introduction to Spreadsheets		ONLINE	Byers, Diana	\$50			X	
<i>*CIS 140 will be taught using the Microsoft Office 2019/Office 365 Windows versions of Word.</i>													
10889	CIS	232	101	4	Serv Admin Use Micro Win Serv	R	6:00 pm-9:15 pm	Walker, Raymond		X			
10129	CIS	235	1N0	3	Fund of Network Security		ONLINE	TBA	\$50			X	
12446	CIS	240	1N0	4	Network Hacking Countermeasure		ONLINE	Davis, Jesse	\$50			X	

## Cosmetology

The Cosmetology program runs Monday - Thursday from 8 a.m. to 5 p.m. To apply students should call 575.769.4945 or stop by Room 403. Students will need to fill out a Cosmetology application, submit high school transcripts to the Office of Admissions, and meet the Accuplacer score requirements prior to being accepted into the program. Applications are now being accepted for Spring 2025.

## Criminal Justice

CRN	SUBJ	NUM	SEC	HRS	TITLE	DAYS	TIME	INSTRUCTOR	FEES	COURSE MODE OPTIONS			
										ON CAMPUS	LIVE ONLINE	ONLINE	HYBRID
11934	CJUS	1110	1N0	3	Intro to Criminal Justice		ONLINE	Gallegos, Mark	\$50			X	
11937	CJUS	1170	1N0	3	Introduction to Criminology		ONLINE	Salazar, Freddie	\$50			X	
11935	CJUS	1190	1N0	3	Intro to Protective Services		ONLINE	Salazar, Freddie	\$50			X	
11938	CJUS	2120	1N0	3	Criminal Courts & Procedure		ONLINE	Salazar, Freddie	\$50			X	
11936	CJUS	2150	1N0	3	Corrections System		ONLINE	Gallegos, Mark	\$50			X	
12616	CJUS	2215	1N0	3	American Judicial System		ONLINE	Salazar, Freddie	\$50			X	

## Dance

CRN	SUBJ	NUM	SEC	HRS	TITLE	DAYS	TIME	INSTRUCTOR	FEES	COURSE MODE OPTIONS			
										ON CAMPUS	LIVE ONLINE	ONLINE	HYBRID
11940	DANC	1110	1N0	3	Dance Appreciation		ONLINE	Heath, Bradley	\$50			X	
12617	DANC	1110	1N1	3	Dance Appreciation		ONLINE	Heath, Bradley	\$50			X	

## Early Childhood Education

CRN	SUBJ	NUM	SEC	HRS	TITLE	DAYS	TIME	INSTRUCTOR	FEES	COURSE MODE OPTIONS			
										ON CAMPUS	LIVE ONLINE	ONLINE	HYBRID
11941	ECED	1110	1N0	3	Child Growth, Dev & Learning		ONLINE	TBA	\$50			X	
11944	ECED	1115	1N0	2	Health, Safety, & Nutrition		ONLINE	Coburn, Michelle	\$50			X	
11949	ECED	1120	1N0	3	Guiding Young Children		ONLINE	Boreing, Karen	\$50			X	
11950	ECED	1125	1N0	3	Assessment Child/Eval Program		ONLINE	Coburn, Michelle	\$50			X	
11947	ECED	1130	1N0	3	Family & Comm Collaboration		ONLINE	Boreing, Karen	\$50			X	
11945	ECED	2115	1Z0	3	Intro to Lang, Literacy & Read	T	6:00 pm-8:30 pm	TBA	\$25	X	X		
11951	ECED	2130	1Z0	3	Curr Dev/Impl Age 3 to Grde 3	W	6:45 pm-9:15 pm	Pipkin, Kayla	\$25	X	X		
12619	ECED	2130	1Z1	3	Curr Dev/Impl Age 3 to Grde 3	W	6:45 pm-9:15 pm	TBA	\$25	X	X		
11952	ECED	2131	1Z0	2	Curr Dev Imp Age 3 Grde 3 Prac	W	5:00 pm-6:40 pm	Pipkin, Kayla	\$25	X	X		
12620	ECED	2131	1Z1	2	Curr Dev Imp Age 3 Grde 3 Prac	W	5:00 pm-6:40 pm	TBA	\$25	X	X		

## Economics

CRN	SUBJ	NUM	SEC	HRS	TITLE	DAYS	TIME	INSTRUCTOR	FEES	COURSE MODE OPTIONS			
										ON CAMPUS	LIVE ONLINE	ONLINE	HYBRID
11955	ECON	2110	1N0	3	Macroeconomic Principles		ONLINE	Kuykendall, Robin	\$50			x	
11956	ECON	2120	1N0	3	Microeconomic Principles		ONLINE	Kuykendall, Robin	\$50			x	

## Electrical Maintenance

The Electrical Maintenance program is part of the Industrial Technology program and trains students in fundamentals of electricity, control systems, planning, design, and power generation and prepares students for jobs that rely on integrated systems. This program is two semesters and runs Tuesdays & Thursdays from 5:30 to 9:15 p.m. To apply students should call 575.769.4945 or stop by Room 403. Students will need to fill out an OT application and meet the Accuplacer score requirements prior to being accepted into the program. Applications are now being accepted for Fall 2025.

## Emergency Medical Services

CRN	SUBJ	NUM	SEC	HRS	TITLE	DAYS	TIME	INSTRUCTOR	FEES	COURSE MODE OPTIONS			
										ON CAMPUS	LIVE ONLINE	ONLINE	HYBRID
12241	EMS	101	101	4	First Responder	M	5:00 pm-9:00 pm	TBA	\$135	x			
12327	EMS	115	1N0	4	Anat/Phys for EMS Professional		ONLINE	Burns, Karen	\$50			x	
12545	EMS	120	1B0	8	Emergency Medical Technician-Basic	TR	6:00 pm-9:30 pm	James, Jay; Mitchell, Ricky	\$474				x
12542	EMS	120	1B1	8	Emergency Medical Technician-Basic	TR	6:00 pm-9:30 pm	James, Jay; Mitchell, Ricky	\$474				x
12546	EMS	120L	101	3	EMT / Basic Lab	MS	6:00 pm-9:30 pm	James, Jay; Mitchell, Ricky	\$65		x		
12543	EMS	120L	102	3	EMT / Basic Lab	MS	5:00 pm-9:00 pm	Burns, Karen	\$65		x		

## English

CRN	SUBJ	NUM	SEC	HRS	TITLE	DAYS	TIME	INSTRUCTOR	FEES	COURSE MODE OPTIONS			
										ON CAMPUS	LIVE ONLINE	ONLINE	HYBRID
11958	ENGL	1110	101	3	Composition I	MW	9:00 am-10:15 am	Brown, Shauma			x		
11957	ENGL	1110	102	3	Composition I	TR	10:30 am-11:45 am	Urioste, Robin			x		
11963	ENGL	1110	1N0	3	Composition I		ONLINE	D'Amour, Linda	\$50			x	
12485	ENGL	1120	101	3	Composition II	MW	1:30 pm-2:45 pm	Hochhalter, Gina			x		
11977	ENGL	1120	1N0	3	Composition II		ONLINE	Urioste, Robin	\$50			x	
12625	ENGL	2210	101	3	Professional & Technical Comm	MW	10:30 am-11:45 am	Hochhalter, Gina			x		
12626	ENGL	2210	1N0	3	Professional & Technical Comm		ONLINE	Hochhalter, Gina	\$50			x	

## Esthetics/Nail Tech

The Esthetics/Nail Tech program is a combined program that runs Monday-Thursday from 8 a.m. to 5 p.m. To apply students should call 575.769.4945 or stop by Room 403. Students will need to fill out a Cosmetology application, submit high school transcripts to the Office of Admissions, and meet the Accuplacer score requirements prior to being accepted into the program. Applications are now being accepted for Fall 2025.

## Exercise Science (HPE Academic Courses)

CRN	SUBJ	NUM	SEC	HRS	TITLE	DAYS	TIME	INSTRUCTOR	FEES	COURSE MODE OPTIONS			
										ON CAMPUS	LIVE ONLINE	ONLINE	HYBRID
12618	EXSC	1110	1N0	2	Youth Fitness		ONLINE	Heath, Bradley	\$50			x	
12216	EXSC	2110	1N0	3	Exercise Physiology		ONLINE	Heath, Bradley	\$50			x	
12215	EXSC	2120	1N0	3	Structural Kinesiology		ONLINE	Heath, Bradley	\$50			x	

## First Year Experience

CRN	SUBJ	NUM	SEC	HRS	TITLE	DAYS	TIME	INSTRUCTOR	FEES	COURSE MODE OPTIONS			
										ON CAMPUS	LIVE ONLINE	ONLINE	HYBRID
12560	FYEX	1113	101	5	Academic Literacy	MW	12:00 pm-2:30 pm	Urioste, Robin		x			
12533	FYEX	1113	102	5	Academic Literacy	TR	9:15 am-11:45 am	Hochhalter, Gina		x			
12399	FYEX	1113	1N0	5	Academic Literacy		ONLINE	D'Amour, Linda	\$50			x	

## Health Education (HPE Academic Courses)

CRN	SUBJ	NUM	SEC	HRS	TITLE	DAYS	TIME	INSTRUCTOR	FEES	COURSE MODE OPTIONS			
										ON CAMPUS	LIVE ONLINE	ONLINE	HYBRID
12213	HLED	1120	1B0	2	Am Red Cross First Aid CPR/AED		TBA	Kraus, Edward	\$55				x
<i>The instructional material of this class will be delivered through an online format. Students will be required to attend one of the two on-campus, hands-on sessions that meet either Tuesday, March 7 from 6:00pm-9:00pm or Wednesday April 9th from 6:00pm-9:00pm.</i>													
12210	HLED	1130	1N0	3	Concepts of Health & Wellness		ONLINE	Kraus, Edward	\$50			x	
12639	HLED	1150	1E0	2	Lifeguarding			Kraus, Edward	\$95	x		x	
					4/4	F	5:30 pm-8:00 pm						
					4/5	S	8:30 am-5:00 pm						
					4/11	F	5:30 pm-8:00 pm						
					4/12	S	8:30 am-5:00 pm						
<i>The HLED class is held for only the four days indicated above. Students should bring the Lifeguarding book to the first class. This book can be purchased at the CCC Bookstore. (300m pretest swim required.)</i>													
12657	HLED	1150	1E1	2	Lifeguarding			Buck, Hayley	\$95	x		x	
					4/18	F	5:30 pm-8:00 pm						
					4/19	S	8:30 am-5:00 pm						
					4/25	F	5:30 pm-8:00 pm						
					4/26	S	8:30 am-5:00 pm						
<i>The HLED class is held for only the four days indicated above. Students should bring the Lifeguarding book to the first class. This book can be purchased at the CCC Bookstore. (300m pretest swim required.)</i>													
12238	HLED	1170	1N0	2	Fitness Concepts Special Popul		ONLINE	Kraus, Edward	\$50			x	
12211	HLED	1220	1N0	2	Personal Health Management		ONLINE	Heath, Bradley	\$50			x	
12212	HLED	2110	1N0	2	Principles of Coaching		ONLINE	TBA	\$50			x	
12330	HLED	2230	101	2	Observation in HPE		TBA	TBA		x			

## History

CRN	SUBJ	NUM	SEC	HRS	TITLE	DAYS	TIME	INSTRUCTOR	FEES	COURSE MODE OPTIONS			
										ON CAMPUS	LIVE ONLINE	ONLINE	HYBRID
12016	HIST	1110	101	3	United States History I	MW	10:30 am-11:45 am	Bridinger De Leon, Vicki		x			
12018	HIST	1110	1N0	3	United States History I		ONLINE	Anderson, Aaron	\$50			x	
12019	HIST	1120	101	3	United States History II	MW	9:00 am-10:15 am	Anderson, Aaron		x			
12021	HIST	1120	1N0	3	United States History II		ONLINE	Anderson, Aaron	\$50			x	
12032	HIST	1130	1N0	3	World History I		ONLINE	Anderson, Aaron	\$50			x	
12034	HIST	1140	1N0	3	World History II		ONLINE	Anderson, Aaron	\$50			x	
12045	HIST	2110	1N0	3	Survey of New Mexico History		ONLINE	Bridinger De Leon, Vicki	\$50			x	
12532	HIST	2310	1N0	3	Intro to Historical Methods		ONLINE	Bridinger De Leon, Vicki	\$50			x	

## Humanities

CRN	SUBJ	NUM	SEC	HRS	TITLE	DAYS	TIME	INSTRUCTOR	FEES	COURSE MODE OPTIONS			
										ON CAMPUS	LIVE ONLINE	ONLINE	HYBRID
12048	HUMN	1110	1N0	3	Intro to World Humanities I		ONLINE	Henry, Robin	\$50			x	
12049	HUMN	2110	1N0	3	Intro to World Humanities II		ONLINE	Henry, Robin	\$50			x	

## Industrial Technology

The Industrial Technology program offers concentrations in Plant Operations & Equipment and Wind Energy. The program runs Monday - Friday from 8 a.m. to 12 p.m. To apply students should call 575.769.4945 or stop by Room 403. Students will need to fill out an OT application and meet the Accuplacer score requirements prior to being accepted into the program. Applications are now being accepted for Spring 2025.

## Legal Studies (Paralegal)

CRN	SUBJ	NUM	SEC	HRS	TITLE	DAYS	TIME	INSTRUCTOR	FEES	COURSE MODE OPTIONS			
										ON CAMPUS	LIVE ONLINE	ONLINE	HYBRID
10312	LEST	104	1N0	3	Torts, Practice and Procedure		ONLINE	Talbert, Laura	\$50			X	
10802	LEST	123	1N0	3	Litigation		ONLINE	Talbert, Laura	\$50			X	
10841	LEST	227	1N0	3	Law Office Prac / Proced		ONLINE	TBA	\$50			X	

## Management

CRN	SUBJ	NUM	SEC	HRS	TITLE	DAYS	TIME	INSTRUCTOR	FEES	COURSE MODE OPTIONS			
										ON CAMPUS	LIVE ONLINE	ONLINE	HYBRID
12050	MGMT	2110	1N0	3	Principles of Management		ONLINE	Reed, Melissa	\$50			X	

## Marketing

CRN	SUBJ	NUM	SEC	HRS	TITLE	DAYS	TIME	INSTRUCTOR	FEES	COURSE MODE OPTIONS			
										ON CAMPUS	LIVE ONLINE	ONLINE	HYBRID
12536	MKTG	2110	101	3	Principles of Marketing	MW	10:30 am-11:45 am	Reed, Melissa		X			

## Mathematics

CRN	SUBJ	NUM	SEC	HRS	TITLE	DAYS	TIME	INSTRUCTOR	FEES	COURSE MODE OPTIONS			
										ON CAMPUS	LIVE ONLINE	ONLINE	HYBRID
12068	MATH	1130	101	3	Survey of Mathematics	T	6:00 pm-8:30 pm	McCune, Sarah		X			
12069	MATH	1130	102	3	Survey of Mathematics	MW	12:00 pm-1:15 pm	McCune, Sarah		X			
12070	MATH	1130	103	3	Survey of Mathematics	MW	1:30 pm-2:45 pm	McCune, Sarah		X			
12071	MATH	1130	1N0	3	Survey of Mathematics		ONLINE	Brown, Jessica	\$50			X	
12491	MATH	1215	101	4	Intermediate Algebra	TR	12:00 pm-1:40 pm	McCune, Sarah		X			
12056	MATH	1215	1N0	4	Intermediate Algebra		ONLINE	Brown, Jessica	\$50			X	
12492	MATH	1220	101	3	College Algebra	TR	10:30 am-11:45 am	McCune, Sarah		X			
12059	MATH	1220	1N0	3	College Algebra		ONLINE	Finney, Brandon	\$50			X	
12494	MATH	1230	1Z0	3	Trigonometry	MW	12:00 pm-01:15 pm	Brown, Jessica	\$25	X	X	X	
12127	MATH	1350	1N0	4	Introduction to Statistics		ONLINE	McCune, Sarah	\$50			X	
12496	MATH	1512	1Z0	4	Calculus I	MW	9:00 am-10:40 am	Finney, Brandon	\$25	X	X	X	
12497	MATH	1522	1Z0	4	Calculus II	TR	12:00 pm-1:40 pm	Finney, Brandon	\$25	X	X	X	
12498	MATH	2420	1Z0	3	Applied Linear Algebra	MW	10:30 am-11:45 am	Brown, Jessica	\$25	X	X	X	
12499	MATH	2430	1Z0	3	Discrete Mathematics	MW	9:00 am-10:15 am	Brown, Jessica	\$25	X	X	X	
12500	MATH	2531	1Z0	4	Calculus III	TR	9:00 am-10:15 am	Finney, Brandon	\$25	X	X	X	

## Music

CRN	SUBJ	NUM	SEC	HRS	TITLE	DAYS	TIME	INSTRUCTOR	FEES	COURSE MODE OPTIONS			
										ON CAMPUS	LIVE ONLINE	ONLINE	HYBRID
12073	MUSC	1130	1N0	3	Music Appreciation: Western		ONLINE	Sena, Sarah	\$50			X	

## Nail Tech/Esthetics

The Nail Tech/Esthetics program is a combined program that runs Monday-Thursday from 8 a.m. to 5 p.m. To apply students should call 575.769.4945 or stop by Room 403. Students will need to fill out a Cosmetology application, submit high school transcripts to the Office of Admissions, and meet the Accuplacer score requirements prior to being accepted into the program. Applications are now being accepted for Fall 2025.

## NMNEC Nursing Program

The Nursing Program runs Monday-Thursday with exams usually given on Fridays. The application is available at clovis.edu/nursing and should be submitted along with transcripts to the Office of Admissions. Deadlines to submit applications are July 1 for Fall and November 1 for Spring.

## Nursing

CRN	SUBJ	NUM	SEC	HRS	TITLE	DAYS	TIME	INSTRUCTOR	FEES	COURSE MODE OPTIONS			
										ON CAMPUS	LIVE ONLINE	ONLINE	HYBRID
12143	NSG	105	1N0	3	Medical Terminology		ONLINE	Zamora, Andrea	\$50			X	
12144	NSG	128	1N0	4	Pathophysiology		ONLINE	McGill, Shawna	\$50			X	
12440	NSG	150	1N0	3	Healthcare Ethics		ONLINE	Cathey, Courtney	\$50			X	

## Nursing Assistant

CRN	SUBJ	NUM	SEC	HRS	TITLE	DAYS	TIME	INSTRUCTOR	FEES	COURSE MODE OPTIONS			
										ON CAMPUS	LIVE ONLINE	ONLINE	HYBRID
12561	NA	101	1B0	6	Nursing Assistant	MW	5:30 pm-8:00 pm	Soto, Elena; Zamora, Andrea	\$105				X

## Nutrition

CRN	SUBJ	NUM	SEC	HRS	TITLE	DAYS	TIME	INSTRUCTOR	FEES	COURSE MODE OPTIONS			
										ON CAMPUS	LIVE ONLINE	ONLINE	HYBRID
12218	NUTR	2110	1N0	3	Human Nutrition		ONLINE	Bull, Shalon	\$50			X	

## Occupational Technology

CRN	SUBJ	NUM	SEC	HRS	TITLE	DAYS	TIME	INSTRUCTOR	FEES	COURSE MODE OPTIONS			
										ON CAMPUS	LIVE ONLINE	ONLINE	HYBRID
10363	OT	122	101	2	Woodworking I	M	6:45 pm-9:15 pm	Oborny, Francis		X			
10367	OT	123	101	2	Woodworking II	M	6:45 pm-9:15 pm	Oborny, Francis		X			
11051	OT	124	101	2	Cabinet Making I	W	6:45 pm-9:15 pm	Oborny, Francis		X			
11052	OT	125	101	2	Cabinet Making II	W	6:45 pm-9:15 pm	Oborny, Francis		X			

## Philosophy

CRN	SUBJ	NUM	SEC	HRS	TITLE	DAYS	TIME	INSTRUCTOR	FEES	COURSE MODE OPTIONS			
										ON CAMPUS	LIVE ONLINE	ONLINE	HYBRID
12652	PHIL	2110	1N0	3	Introduction to Ethics		ONLINE	TBA	\$50			X	

## Phlebotomy

CRN	SUBJ	NUM	SEC	HRS	TITLE	DAYS	TIME	INSTRUCTOR	FEES	COURSE MODE OPTIONS			
										ON CAMPUS	LIVE ONLINE	ONLINE	HYBRID
11784	PHLB	102	1V0	3	Intro to Medical Lab Theory	MW	8:00 am-10:30 am	Meeks, Garret		x			
11713	PHLB	102	1V1	3	Intro to Medical Lab Theory	TR	8:00 am-10:30 am	Meeks, Garret		x			
11785	PHLB	103	1V0	3	Phlebotomy Theory	MW	8:00 am-10:30 am	Meeks, Garret	\$90	x			
11714	PHLB	103	1V1	3	Phlebotomy Theory	TR	8:00 am-10:30 am	Meeks, Garret	\$90	x			
11786	PHLB	103L	1V0	2	Phlebotomy Lab	MW	10:30 am-12:30 pm	Meeks, Garret		x			
11715	PHLB	103L	1V1	2	Phlebotomy Lab	TR	10:30 am-12:30 pm	Meeks, Garret		x			
11787	PHLB	104	1V0	2	Clinical Phlebotomy	MW	1:30 pm-3:30 pm	Meeks, Garret		x			
11716	PHLB	104	1V1	2	Clinical Phlebotomy	TR	1:30 pm-3:30 pm	Meeks, Garret		x			

*Students are required to register concurrently for all four of the phlebotomy courses listed above.*

## Physical Education (HPE Activity Courses)

CRN	SUBJ	NUM	SEC	HRS	TITLE	DAYS	TIME	INSTRUCTOR	FEES	COURSE MODE OPTIONS			
										ON CAMPUS	LIVE ONLINE	ONLINE	HYBRID
12231	PHED	1110	101	1	Dance: Beginning Belly Dancing	M	6:00 pm-7:40 pm	Chavez, Yolanda		x			
12193	PHED	1110	102	1	Dance: Country & Western Dance	T	6:15 pm-7:55 pm	Boney, Debbie		x			
<i>*need a partner to dance with</i>													
12502	PHED	1110	103	1	Dance: Aerobic Dance	MW	9:00 am-9:50 am	Mulhair, Amanda		x			
12503	PHED	1280	101	1	Volleyball	R	5:30 pm-6:50 pm	Roberts, Valerie		x			
12628	PHED	1310	101	1	Swim I: Beginning Swimming	TR	12:00 pm-12:50 pm	Kraus, Edward		x			
12162	PHED	1320	101	1	Aqua Fit: Senior Aquatics	TR	3:00 pm-3:50 pm	Williamson, Christine	\$20	x			
12163	PHED	1320	102	1	Aqua Fit: Water Aerobics	MW	8:00 am-8:50 am	TBA	\$20	x			
12164	PHED	1320	103	1	Aqua Fit: Water Aerobics	MW	9:00 am-9:50 am	TBA	\$20	x			
12165	PHED	1320	104	1	Aqua Fit: Water Aerobics	MW	5:00 pm-5:50 pm	TBA	\$20	x			
12167	PHED	1320	105	1	Aqua Fit: Water Aerobics	TR	8:00 am-8:50 am	TBA	\$20	x			
12412	PHED	1320	106	1	Aqua Fit: Water Aerobics	TR	4:00 pm-4:50 pm	TBA	\$20	x			
12168	PHED	1320	107	1	Aqua Fit: Water Aerobics	TR	5:00 pm-5:50 pm	Williamson, Christine	\$20	x			
12232	PHED	1410	101	1	Yoga: Beginning Yoga	M	4:00 pm-5:40 pm	Chavez, Yolanda		x			
12169	PHED	1410	102	1	Yoga: Beginning Yoga	T	2:30 pm-4:10 pm	Chavez, Yolanda		x			
12170	PHED	1410	103	1	Yoga: Beginning Yoga	W	2:30 pm-4:10 pm	Chavez, Yolanda		x			
12173	PHED	1410	104	1	Yoga: Beginning Yoga	TR	6:10 am-7:00 am	Golder, Terri		x			
12174	PHED	1430	101	1	Pilates	MW	8:00 am-8:50 am	Williamson, Christine		x			
12185	PHED	1510	101	1	Training: Body Sculpting	MW	1:00 pm-1:50 pm	Williamson, Christine		x			
<i>*This section is recommended for senior citizens.</i>													
12187	PHED	1510	102	1	Training: Body Sculpting	TR	8:00 am-8:50 am	Williamson, Christine		x			
12197	PHED	1510	103	1	Training: Beg. Weight Training	MW	4:00 pm-4:50 pm	Kraus, Edward		x			
12198	PHED	1510	104	1	Training: Beg. Weight Training	TR	12:00 pm-12:50 pm	Heath, Bradley		x			
12200	PHED	1510	105	1	Training: Circuit Training	TR	9:00 am-9:50 am	Arnett, Emily		x			
12201	PHED	1510	106	1	Training: Circuit Training	TR	5:00 pm-5:50 pm	Kraus, Edward		x			
12413	PHED	1510	107	1	Training: Kickboxing	TR	6:00 pm-6:50 pm	Watson, Michael		x			
12188	PHED	1610	101	1	Fitness for Life		TBA	Heath, Bradley		x			
12176	PHED	1620	101	1	Fitness: Indoor Cycling	MW	6:10 am-7:00 am	O'Rear, Tammi		x			
12177	PHED	1620	102	1	Fitness: Indoor Cycling	MW	9:00 am-9:50 am	Lamb, Kimberly		x			
12179	PHED	1620	103	1	Fitness: Indoor Cycling	TR	6:10 am-7:00 am	O'Rear, Tammi		x			
12183	PHED	1620	104	1	Fitness: Core Fitness I	MW	12:00 pm-12:50 pm	Williamson, Christine		x			
12523	PHED	1710	101	1	Martial Arts: Self-Defense	T	7:00 pm-8:40 pm	Watson, Michael		x			
12175	PHED	1710	102	1	Martial Arts: Self-Defense	R	7:00 pm-8:40 pm	Watson, Michael		x			

## Physical Education (HPE Activity Courses) *Continued*

CRN	SUBJ	NUM	SEC	HRS	TITLE	DAYS	TIME	INSTRUCTOR	FEES	COURSE MODE OPTIONS			
										ON CAMPUS	LIVE ONLINE	ONLINE	HYBRID
12205	PHED	2230	101	1	Ind Sport II: Int. Racquetball	MW	5:30 pm-6:20 pm	Bussen, Mark		x			
12234	PHED	2996	101	1	Topics in PE: Mindful/Meditatn	W	5:00 pm-6:40 pm	Chavez, Yolanda		x			
12507	PHED	2996	102	1	Topics in PE: Tai Chi	MW	12:00 pm-12:50 pm	Burch, Paul		x			
12233	PHED	2996	103	1	Topics in PE: Tai Chi	TR	1:00 pm-1:50 pm	McConnell, Heather		x			

## Physical Therapist Assistant

The Physical Therapist Assistant Program runs Monday-Thursday. The application is available at [clovis.edu/pta](http://clovis.edu/pta) and should be submitted along with transcripts and observation hours log to the Office of Admissions. The deadline to submit applications is September 1.

## Physics

CRN	SUBJ	NUM	SEC	HRS	TITLE	DAYS	TIME	INSTRUCTOR	FEES	COURSE MODE OPTIONS			
										ON CAMPUS	LIVE ONLINE	ONLINE	HYBRID
12508	PHYS	1115C	1N0	4	Survey of Physics with Lab		ONLINE	Bowman, Lorraine	\$50			x	
12509	PHYS	1230C	1Z0	4	Algebra-Based Physics I/Lab	TR	9:00 am-11:30 am	Brown, Jessica	\$25	x	x	x	

## Political Science

CRN	SUBJ	NUM	SEC	HRS	TITLE	DAYS	TIME	INSTRUCTOR	FEES	COURSE MODE OPTIONS			
										ON CAMPUS	LIVE ONLINE	ONLINE	HYBRID
12634	POLS	1120	1B0	3	American National Government	TR	10:30 am-11:45 am	Fuentes, Jonathan	\$25				x
12081	POLS	1120	1N0	3	American National Government		ONLINE	Moore, Sarah	\$50			x	

## Psychology

CRN	SUBJ	NUM	SEC	HRS	TITLE	DAYS	TIME	INSTRUCTOR	FEES	COURSE MODE OPTIONS			
										ON CAMPUS	LIVE ONLINE	ONLINE	HYBRID
12082	PSYC	1110	101	3	Introduction to Psychology	M	6:00 pm-8:30 pm	Christian, Hayley		x			
12084	PSYC	1110	102	3	Introduction to Psychology	MW	9:00 am-10:15 am	Piepkorn, Jennie		x			
12085	PSYC	1110	103	3	Introduction to Psychology	TR	10:30 am-11:45 am	Piepkorn, Jennie		x			
12086	PSYC	1110	104	3	Introduction to Psychology	TR	1:30 pm-2:45 pm	Piepkorn, Jennie		x			
12087	PSYC	1110	1N0	3	Introduction to Psychology		ONLINE	Piepkorn, Jennie	\$50			x	
12090	PSYC	2120	101	3	Developmental Psychology	T	6:00 pm-8:30 pm	TBA		x			
12091	PSYC	2120	102	3	Developmental Psychology	MW	12:00 pm-1:15 pm	Piepkorn, Jennie		x			
12093	PSYC	2120	1N0	3	Developmental Psychology		ONLINE	Sena, Mindy	\$50			x	
12097	PSYC	2130	1N0	3	Adolescent Psychology		ONLINE	Christian, Hayley	\$50			x	
12095	PSYC	2140	101	3	Child Psychology	MW	10:30 am-11:45 am	Piepkorn, Jennie		x			
12096	PSYC	2140	1N0	3	Child Psychology		ONLINE	Piepkorn, Jennie	\$50			x	
12635	PSYC	2445	1N0	3	Parenting Skills		ONLINE	Smith, Marcus	\$50			x	

## Radiologic Technology

The Radiology Program runs Monday-Thursday. The application is available at [clovis.edu/radt](http://clovis.edu/radt) and should be submitted along with transcripts to the Office of Admissions. The deadline to submit applications is July 1.

## Religion

CRN	SUBJ	NUM	SEC	HRS	TITLE	DAYS	TIME	INSTRUCTOR	FEES	COURSE MODE OPTIONS			
										ON CAMPUS	LIVE ONLINE	ONLINE	HYBRID
<a href="#">12572</a>	RELG	1110	1N0	3	Intro to World Religions		ONLINE	Bush, David	\$50			X	
<a href="#">12573</a>	RELG	1126	1N0	3	New Testament		ONLINE	Bush, David	\$50			X	
<a href="#">12574</a>	RELG	2220	1N0	3	Women of the Bible		ONLINE	Kirby, Richard	\$50			X	
<a href="#">12575</a>	RELG	2230	1N0	3	Men of the Bible		ONLINE	Kirby, Richard	\$50			X	

## Sign (American Sign Language)

CRN	SUBJ	NUM	SEC	HRS	TITLE	DAYS	TIME	INSTRUCTOR	FEES	COURSE MODE OPTIONS			
										ON CAMPUS	LIVE ONLINE	ONLINE	HYBRID
<a href="#">12106</a>	SIGN	1110	101	3	American Sign Language I	TR	10:30 am-11:45 am	Guillen, Teresa		X			
<a href="#">12576</a>	SIGN	1120	101	4	American Sign Language II	T	6:00 pm-9:15 pm	Guillen, Teresa		X			

## Social Work

CRN	SUBJ	NUM	SEC	HRS	TITLE	DAYS	TIME	INSTRUCTOR	FEES	COURSE MODE OPTIONS			
										ON CAMPUS	LIVE ONLINE	ONLINE	HYBRID
<a href="#">12637</a>	SOWK	2110	1N0	3	Intro to Human Service/Soc Wk		ONLINE	Grussendorf, Erika	\$50			X	

## Sociology

CRN	SUBJ	NUM	SEC	HRS	TITLE	DAYS	TIME	INSTRUCTOR	FEES	COURSE MODE OPTIONS			
										ON CAMPUS	LIVE ONLINE	ONLINE	HYBRID
<a href="#">12636</a>	SOCI	1110	101	3	Introduction to Sociology	T	6:00 pm-8:30 pm	Richeson, J		X			
<a href="#">12107</a>	SOCI	1110	102	3	Introduction to Sociology	MW	10:30 am-11:45 am	Richeson, J		X			
<a href="#">12108</a>	SOCI	1110	1N0	3	Introduction to Sociology		ONLINE	Richeson, J	\$50			X	
<a href="#">12120</a>	SOCI	2240	1N0	3	Soc Intimate Relations/Family		ONLINE	Richeson, J	\$50			X	

## Spanish

CRN	SUBJ	NUM	SEC	HRS	TITLE	DAYS	TIME	INSTRUCTOR	FEES	COURSE MODE OPTIONS			
										ON CAMPUS	LIVE ONLINE	ONLINE	HYBRID
<a href="#">112577</a>	SPAN	1110	101	4	Spanish I	MW	12:00 pm-1:15 pm	Guillen, Teresa		X			
<a href="#">12122</a>	SPAN	1110	1N0	4	Spanish I		ONLINE	Guillen, Teresa	\$50			X	
<a href="#">12638</a>	SPAN	1120	101	4	Spanish II	TR	12:00 pm-1:15 pm	Guillen, Teresa		X			
<a href="#">12124</a>	SPAN	1120	1N0	4	Spanish II		ONLINE	Guillen, Teresa	\$50			X	

## Theatre

CRN	SUBJ	NUM	SEC	HRS	TITLE	DAYS	TIME	INSTRUCTOR	FEES	COURSE MODE OPTIONS			
										ON CAMPUS	LIVE ONLINE	ONLINE	HYBRID
<a href="#">12658</a>	THEA	1110	101	3	Introduction to Theatre	MW	1:30 pm-2:45 pm	Holt, Jessica		X			
<a href="#">12659</a>	THEA	1110	1N0	3	Introduction to Theatre		ONLINE	Holt, Jessica	\$50			X	
<a href="#">12660</a>	THEA	1220	101	3	Beginning Acting	TR	1:30 pm-2:45 pm	Holt, Jessica		X			
<a href="#">12661</a>	THEA	2250	101	3	The Company Class	MW	10:30 am-11:45 am	Holt, Jessica		X			



## Transitional Studies

CRN	SUBJ	NUM	SEC	HRS	TITLE	DAYS	TIME	INSTRUCTOR	FEES	COURSE MODE OPTIONS			
										ON CAMPUS	LIVE ONLINE	ONLINE	HYBRID
<b>11696</b>	TRST	0930	101	4	Basic Algebra I	T	6:00 pm-9:15 pm	TBA		x			
<b>12528</b>	TRST	0930	1N0	4	Basic Algebra I		ONLINE	TBA	\$50			x	
<b>11735</b>	TRST	0931	101	4	Basic Algebra II	T	6:00 pm-9:15 pm	TBA		x			
<b>11792</b>	TRST	0931	1N0	4	Basic Algebra II		ONLINE	TBA	\$50			x	

## Welding

CRN	SUBJ	NUM	SEC	HRS	TITLE	DAYS	TIME	INSTRUCTOR	FEES	COURSE MODE OPTIONS			
										ON CAMPUS	LIVE ONLINE	ONLINE	HYBRID
<b>11486</b>	WELD	272	101	3	Gen Welding for the Hobbyist	M	5:30 pm-8:30 pm	Poindexter, Sean	\$400	x			

Other than the hobbyist class listed above, the full-time Welding program runs Monday Thursday from 7 a.m. to 12 p.m. To apply students should call 575.769.4945 or stop by Room 403. Students will need to complete an OT application, and meet the Accuplacer score requirements prior to being accepted into the program. Applications are now being accepted for Spring 2025.

## First 8-Weeks

January 21 - March 14

## Art History

CRN	SUBJ	NUM	SEC	HRS	TITLE	DAYS	TIME	INSTRUCTOR	FEES	COURSE MODE OPTIONS			
										ON CAMPUS	LIVE ONLINE	ONLINE	HYBRID
<b>12607</b>	ARTH	1110	1N4	3	Art Appreciation		ONLINE	Anderson, Marsha	\$50			x	
<b>12609</b>	ARTH	2120	1N4	3	History of Art II		ONLINE	Longhofer, Michael	\$50			x	

## Biology

CRN	SUBJ	NUM	SEC	HRS	TITLE	DAYS	TIME	INSTRUCTOR	FEES	COURSE MODE OPTIONS			
										ON CAMPUS	LIVE ONLINE	ONLINE	HYBRID
<b>12335</b>	BIOL	2210C	1N4	4	Human Anat/Phys I Lec/Lab		ONLINE	Kuykendall, Todd	\$50			x	

## Business and Office Technology

CRN	SUBJ	NUM	SEC	HRS	TITLE	DAYS	TIME	INSTRUCTOR	FEES	COURSE MODE OPTIONS			
										ON CAMPUS	LIVE ONLINE	ONLINE	HYBRID
<b>11282</b>	BOFT	101	1N4	1	Personal Keyboarding		ONLINE	Ewers, Dannette	\$50			x	
<b>12516</b>	BOFT	102	1N4	1	Computerized 10-Key Operations		ONLINE	Ewers, Dannette	\$50			x	

## Chemistry

CRN	SUBJ	NUM	SEC	HRS	TITLE	DAYS	TIME	INSTRUCTOR	FEES	COURSE MODE OPTIONS			
										ON CAMPUS	LIVE ONLINE	ONLINE	HYBRID
<b>11914</b>	CHEM	1120C	1N4	4	Intro to Chem Lec/Lab Non-Maj		ONLINE	Omopariola, Ayomide	\$50			x	

## Communication

CRN	SUBJ	NUM	SEC	HRS	TITLE	DAYS	TIME	INSTRUCTOR	FEES	COURSE MODE OPTIONS			
										ON CAMPUS	LIVE ONLINE	ONLINE	HYBRID
12386	COMM	1130	1N4	3	Public Speaking		ONLINE	Knight, Kelsey	\$50			X	
12476	COMM	1130	1Z4	3	Public Speaking	MW	4:30 pm-7:00 pm	Knight, Kelsey	\$25	X	X	X	
<i>*This class meets at CAFB or can attend online.</i>													
12227	COMM	2120	1N4	3	Interpersonal Communication		ONLINE	Thomas, Celeste	\$50			X	

## Computer Information Systems

CRN	SUBJ	NUM	SEC	HRS	TITLE	DAYS	TIME	INSTRUCTOR	FEES	COURSE MODE OPTIONS			
										ON CAMPUS	LIVE ONLINE	ONLINE	HYBRID
11119	CIS	106	1N4	1	Windows Fundamentals		ONLINE	Davis, Patrick	\$50			X	
<i>*CIS 106 will be taught using Windows 10.</i>													

## Early Childhood Education

CRN	SUBJ	NUM	SEC	HRS	TITLE	DAYS	TIME	INSTRUCTOR	FEES	COURSE MODE OPTIONS			
										ON CAMPUS	LIVE ONLINE	ONLINE	HYBRID
11942	ECED	1110	1N4	3	Child Growth, Dev & Learning		ONLINE	Coburn, Michelle	\$50			X	

## Economics

CRN	SUBJ	NUM	SEC	HRS	TITLE	DAYS	TIME	INSTRUCTOR	FEES	COURSE MODE OPTIONS			
										ON CAMPUS	LIVE ONLINE	ONLINE	HYBRID
12621	ECON	2110	1N4	3	Macroeconomic Principles		ONLINE	Kuykendall, Robin	\$50			X	

## English

CRN	SUBJ	NUM	SEC	HRS	TITLE	DAYS	TIME	INSTRUCTOR	FEES	COURSE MODE OPTIONS			
										ON CAMPUS	LIVE ONLINE	ONLINE	HYBRID
12521	ENGL	1110	1Z4	3	Composition I	TR	4:30 pm-7:00 pm	Brown, Shauma	\$25	X	X	X	
<i>*This class meets at CAFB or can attend online.</i>													
12337	ENGL	1110	1N4	3	Composition I		ONLINE	Brown, Shauma	\$50			X	
12394	ENGL	1120	1N4	3	Composition II		ONLINE	Hochhalter, Gina	\$50			X	

## Film & Digital Media Art

CRN	SUBJ	NUM	SEC	HRS	TITLE	DAYS	TIME	INSTRUCTOR	FEES	COURSE MODE OPTIONS			
										ON CAMPUS	LIVE ONLINE	ONLINE	HYBRID
12487	FDMA	2713	1N4	3	Computer 2D Animation		ONLINE	Hurlebusch, Judith	\$50			X	

## Occupational Technology

CRN	SUBJ	NUM	SEC	HRS	TITLE	DAYS	TIME	INSTRUCTOR	FEES	COURSE MODE OPTIONS			
										ON CAMPUS	LIVE ONLINE	ONLINE	HYBRID
10365	OT	122	130	2	Woodworking I	TR	6:45 pm-9:15 pm	Oborny, Robert		X			
10369	OT	123	130	2	Woodworking II	TR	6:45 pm-9:15 pm	Oborny, Robert		X			

## Physical Education (HPE Activity Courses)

CRN	SUBJ	NUM	SEC	HRS	TITLE	DAYS	TIME	INSTRUCTOR	FEES	COURSE MODE OPTIONS			
										ON CAMPUS	LIVE ONLINE	ONLINE	HYBRID
12566	PHED	1620	130	1	Fitness: Indoor Cycling	MW	4:00 pm-5:40 pm	Rodriguez, Jacob		X			
12180	PHED	1620	131	1	Fitness: Indoor Cycling	TR	9:00 am-10:40 am	Heath, Bradley		X			
12629	PHED	1620	132	1	Fitness: Walking for Fitness	MTWR	7:00 am-7:50 am	Roberts, Valerie		X			
12520	PHED	1620	133	1	Fitness: Walking for Fitness	MW	10:00 am-11:40 am	Lamb, Kimberly		X			
12568	PHED	2996	130	1	Topics in PE: Pickleball	MW	9:00 am - 10:40 am	Heath, Bradley		X			
12569	PHED	2996	131	1	Topics in PE: Pickleball	MW	4:00 pm-5:40 pm	Roberts, Valerie		X			
12584	PHED	2996	132	1	Topics in PE: Pickleball	TR	9:00 am-10:40 am	Roberts, Valerie		X			

## Psychology

CRN	SUBJ	NUM	SEC	HRS	TITLE	DAYS	TIME	INSTRUCTOR	FEES	COURSE MODE OPTIONS			
										ON CAMPUS	LIVE ONLINE	ONLINE	HYBRID
12088	PSYC	1110	1N4	3	Introduction to Psychology		ONLINE	Piepkorn, Jennie	\$50			X	

## Transitional Studies

CRN	SUBJ	NUM	SEC	HRS	TITLE	DAYS	TIME	INSTRUCTOR	FEES	COURSE MODE OPTIONS			
										ON CAMPUS	LIVE ONLINE	ONLINE	HYBRID
12514	TRST	0930	1N4	4	Basic Algebra I		ONLINE	TBA	\$50			X	

## Second 8-Weeks

March 24 - May 16

## Art History

CRN	SUBJ	NUM	SEC	HRS	TITLE	DAYS	TIME	INSTRUCTOR	FEES	COURSE MODE OPTIONS			
										ON CAMPUS	LIVE ONLINE	ONLINE	HYBRID
12463	ARTH	1110	1N7	3	Art Appreciation		ONLINE	Anderson, Marsha	\$50			X	

## Biology

CRN	SUBJ	NUM	SEC	HRS	TITLE	DAYS	TIME	INSTRUCTOR	FEES	COURSE MODE OPTIONS			
										ON CAMPUS	LIVE ONLINE	ONLINE	HYBRID
12656	BIOL	1110C	1N7	4	General Biology Lecture/Lab		ONLINE	TBA	\$50			X	
12336	BIOL	2225C	1N7	4	Human Anat/Phys II Lec/Lab		ONLINE	Kuykendall, Todd	\$50			X	
12642	BIOL	2310C	1N7	4	Microbiology Lecture/Lab		ONLINE	Buller, Karl	\$50			X	

## Business Administration

CRN	SUBJ	NUM	SEC	HRS	TITLE	DAYS	TIME	INSTRUCTOR	FEES	COURSE MODE OPTIONS			
										ON CAMPUS	LIVE ONLINE	ONLINE	HYBRID
12368	BUSA	1110	1N7	3	Introduction to Business		ONLINE	TBA	\$50			X	

## Business Computer Information Systems

CRN	SUBJ	NUM	SEC	HRS	TITLE	DAYS	TIME	INSTRUCTOR	FEES	COURSE MODE OPTIONS			
										ON CAMPUS	LIVE ONLINE	ONLINE	HYBRID
12370	BCIS	1110	1N7	3	Fund of Info Literacy/Systems		ONLINE	Byers, Diana	\$50			X	

\*BCIS 1110 covers the Microsoft Office 2019/Office 365 Windows versions of Word, Excel, Access, and PowerPoint.

## Business and Office Technology

CRN	SUBJ	NUM	SEC	HRS	TITLE	DAYS	TIME	INSTRUCTOR	FEES	COURSE MODE OPTIONS			
										ON CAMPUS	LIVE ONLINE	ONLINE	HYBRID
11283	BOFT	101	1N7	1	Personal Keyboarding		ONLINE	Ewers, Dannette	\$50			X	
10990	BOFT	102	1N7	1	Computerized 10-Key Operations		ONLINE	Ewers, Dannette	\$50			X	
12299	BOFT	115	1N7	3	Workplace and Life Essentials		ONLINE	Turner, Monica	\$50			X	

## Chemistry

CRN	SUBJ	NUM	SEC	HRS	TITLE	DAYS	TIME	INSTRUCTOR	FEES	COURSE MODE OPTIONS			
										ON CAMPUS	LIVE ONLINE	ONLINE	HYBRID
12643	CHEM	1120C	1N7	4	Intro to Chem Lec/Lab Non-Maj		ONLINE	TBA	\$50			X	

## Communication

CRN	SUBJ	NUM	SEC	HRS	TITLE	DAYS	TIME	INSTRUCTOR	FEES	COURSE MODE OPTIONS			
										ON CAMPUS	LIVE ONLINE	ONLINE	HYBRID
11923	COMM	1130	1N7	3	Public Speaking		ONLINE	Knight, Kelsey	\$50			X	
12357	COMM	2120	1N7	3	Interpersonal Communication		ONLINE	Thomas, Celeste	\$50			X	

## Computer Information Systems

CRN	SUBJ	NUM	SEC	HRS	TITLE	DAYS	TIME	INSTRUCTOR	FEES	COURSE MODE OPTIONS			
										ON CAMPUS	LIVE ONLINE	ONLINE	HYBRID
11041	CIS	107	1N7	1	Internet Fundamentals		ONLINE	Davis, Patrick	\$50			X	

\*CIS 107 will be taught using Windows 10.

12644	CIS	170	1N7	1	PowerPoint Presentations		ONLINE	Byers, Diana	\$50			X	
-------	-----	-----	-----	---	--------------------------	--	--------	--------------	------	--	--	---	--

## Early Childhood Education

CRN	SUBJ	NUM	SEC	HRS	TITLE	DAYS	TIME	INSTRUCTOR	FEES	COURSE MODE OPTIONS			
										ON CAMPUS	LIVE ONLINE	ONLINE	HYBRID
11948	ECED	1130	1N7	3	Family & Comm Collaboration		ONLINE	Coburn, Michelle	\$50			X	

## Economics

CRN	SUBJ	NUM	SEC	HRS	TITLE	DAYS	TIME	INSTRUCTOR	FEES	COURSE MODE OPTIONS			
										ON CAMPUS	LIVE ONLINE	ONLINE	HYBRID
12622	ECON	2120	1N7	3	Microeconomic Principles		ONLINE	Kuykendall, Robin	\$50			X	

## English

CRN	SUBJ	NUM	SEC	HRS	TITLE	DAYS	TIME	INSTRUCTOR	FEES	COURSE MODE OPTIONS			
										ON CAMPUS	LIVE ONLINE	ONLINE	HYBRID
12356	ENGL	1110	1N7	3	Composition I		ONLINE	D'Amour, Linda	\$50			X	
12338	ENGL	1120	1N7	3	Composition II		ONLINE	Hochhalter, Gina	\$50			X	

## Film & Digital Media Art

CRN	SUBJ	NUM	SEC	HRS	TITLE	DAYS	TIME	INSTRUCTOR	FEES	COURSE MODE OPTIONS			
										ON CAMPUS	LIVE ONLINE	ONLINE	HYBRID
12222	FDMA	2790	1N7	3	Game Design Concepts		ONLINE	Davis, Terry	\$50			X	

## First Year Experience

CRN	SUBJ	NUM	SEC	HRS	TITLE	DAYS	TIME	INSTRUCTOR	FEES	COURSE MODE OPTIONS			
										ON CAMPUS	LIVE ONLINE	ONLINE	HYBRID
12010	FYEX	1110	1N7	3	First Year Seminar		ONLINE	D'Amour, Linda	\$50			X	
12401	FYEX	1113	1N7	5	Academic Literacy		ONLINE	TBA	\$50			X	

## History

CRN	SUBJ	NUM	SEC	HRS	TITLE	DAYS	TIME	INSTRUCTOR	FEES	COURSE MODE OPTIONS			
										ON CAMPUS	LIVE ONLINE	ONLINE	HYBRID
12583	HIST	1120	1N7	3	United States History II		ONLINE	Anderson, Aaron	\$50			X	

## Mathematics

CRN	SUBJ	NUM	SEC	HRS	TITLE	DAYS	TIME	INSTRUCTOR	FEES	COURSE MODE OPTIONS			
										ON CAMPUS	LIVE ONLINE	ONLINE	HYBRID
12490	MATH	1130	1Z7	3	Survey of Mathematics	MW	4:30 pm-7:00 pm	TBA	\$25	X	X	X	

*\*This class meets at CAFB or can attend online.*

## Nursing

CCRN	SUBJ	NUM	SEC	HRS	TITLE	DAYS	TIME	INSTRUCTOR	FEES	COURSE MODE OPTIONS			
										ON CAMPUS	LIVE ONLINE	ONLINE	HYBRID
12341	NSG	105	1N7	3	Medical Terminology		ONLINE	Zamora, Andrea	\$50			X	
12147	NSG	128	1N7	4	Pathophysiology		ONLINE	McGill, Shawna	\$50			X	
11750	NSG	150	1N7	3	Healthcare Ethics		ONLINE	Cathey, Courtney	\$50			X	

## Nutrition

CRN	SUBJ	NUM	SEC	HRS	TITLE	DAYS	TIME	INSTRUCTOR	FEES	COURSE MODE OPTIONS			
										ON CAMPUS	LIVE ONLINE	ONLINE	HYBRID
12219	NUTR	2110	1N7	3	Human Nutrition		ONLINE	Bull, Shalon	\$50			X	

## Occupational Technology

CRN	SUBJ	NUM	SEC	HRS	TITLE	DAYS	TIME	INSTRUCTOR	FEES	COURSE MODE OPTIONS			
										ON CAMPUS	LIVE ONLINE	ONLINE	HYBRID
<b>10366</b>	OT	122	135	2	Woodworking I	TR	6:45 pm-9:15 pm	Oborny, Robert		X			
<b>10370</b>	OT	123	135	2	Woodworking II	TR	6:45 pm-9:15 pm	Oborny, Robert		X			

## Physical Education (HPE Activity Courses)

CRN	SUBJ	NUM	SEC	HRS	TITLE	DAYS	TIME	INSTRUCTOR	FEES	COURSE MODE OPTIONS			
										ON CAMPUS	LIVE ONLINE	ONLINE	HYBRID
<b>12203</b>	PHED	1230	135	1	Individual Sport: Tennis	MW	10:00 am-11:40 am	Heath, Bradley		X			
<i>*Students must provide their own golf clubs.</i>													
<b>12181</b>	PHED	1620	135	1	Fitness: Indoor Cycling	TR	9:00 am-10:40 am	Roberts, Valerie		X			
<b>12630</b>	PHED	1620	136	1	Fitness: Walking for Fitness	MTWR	7:00 am-7:50 am	Roberts, Valerie		X			
<b>12631</b>	PHED	1620	137	1	Fitness: Walking for Fitness	MW	10:00 am-11:40 am	Lamb, Kimberly		X			
<b>12598</b>	PHED	2230	135	1	Individ. Sport II: Int. Tennis	TR	6:00 pm-7:40 pm	Heath, Bradley		X			
<b>12651</b>	PHED	2996	135	1	Topics in PE: Pickleball	MW	4:00 pm-5:40 pm	Heath, Bradley		X			
<b>12633</b>	PHED	2996	136	1	Topics in PE: Pickleball	TR	9:00 am-10:40 am	Heath, Bradley		X			

## Psychology

CRN	SUBJ	NUM	SEC	HRS	TITLE	DAYS	TIME	INSTRUCTOR	FEES	COURSE MODE OPTIONS			
										ON CAMPUS	LIVE ONLINE	ONLINE	HYBRID
<b>12089</b>	PSYC	1110	1N7	3	Introduction to Psychology		ONLINE	Piepkorn, Jennie	\$50			X	
<b>12094</b>	PSYC	2120	1N7	3	Developmental Psychology		ONLINE	Sena, Mindy	\$50			X	

## Sociology

CRN	SUBJ	NUM	SEC	HRS	TITLE	DAYS	TIME	INSTRUCTOR	FEES	COURSE MODE OPTIONS			
										ON CAMPUS	LIVE ONLINE	ONLINE	HYBRID
<b>12109</b>	SOCI	1110	1N7	3	Introduction to Sociology		ONLINE	Richeson, J	\$50			X	
<b>12603</b>	SOCI	2240	1N7	3	Soc Intimate Relations/Family		ONLINE	Richeson, J	\$50			X	

## Transitional Studies

CRN	SUBJ	NUM	SEC	HRS	TITLE	DAYS	TIME	INSTRUCTOR	FEES	COURSE MODE OPTIONS			
										ON CAMPUS	LIVE ONLINE	ONLINE	HYBRID
<b>11705</b>	TRST	0931	1N7	4	Basic Algebra II		ONLINE	TBA	\$50			X	

## PATHWAY ONLINE SERVICES PORTAL

Pathway is CCC's online services portal for students to access information and services. When you are admitted to CCC, you will be issued a C-Number for accessing your Pathway account. For help with Pathway, please call the CCC Help Desk at [575.769.4969](tel:575.769.4969).

[pathway.clovis.edu](http://pathway.clovis.edu)

- Register, add, or drop classes

- Access Student Email
- View Transcripts

- Access Library Resources  
...and more!

# REGISTRATION & NEW STUDENT INFO

## ACCUPLACER ASSESSMENT

All students enrolling for the first time in courses with a math component, a writing component, or courses that require extensive reading are required to take the Accuplacer assessment before registering. The Accuplacer assessment is given in the Testing Center. Students are required to register for the appropriate level of classes indicated by the results of the assessment.

The computerized assessment is free and covers mathematics, writing, and reading. Low scores will not keep students from enrolling in college, but some courses and programs have minimum score requirements.

Students may be exempt from taking the Accuplacer assessment if they have other test scores (e.g., ACT/SAT) that demonstrate college level skills. A valid picture identification is required when testing. After completing the assessment, take a copy of your Accuplacer Student Score Report to your Academic Advisor.

For more information on the Accuplacer assessment, including Testing Center hours of operation, call the Testing Center at [575.769.4088](tel:575.769.4088).

## ADVISING

All students are encouraged to contact an Advisor prior to registering for assistance with course selection. The following students are required to meet with an Academic Advisor:

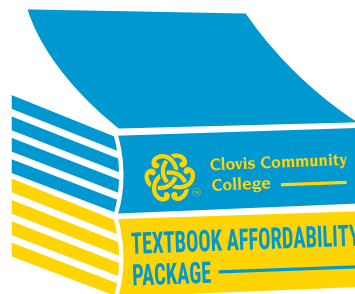
- First-time, degree-seeking students
- All Financial Aid students
- Students applying for Veteran's Assistance
- Students returning from academic probation or suspension status

Advisors are available on a walk-in basis. Each Advisor specializes in different major fields and student needs. Please contact the Academic Advising Office at [575.769.4020](tel:575.769.4020) or email [academic.advising@clovis.edu](mailto:academic.advising@clovis.edu) for hours of operation or more information.

## BOOKS AND SUPPLIES

Books and supplies are available at CCC's Bookstore. Please pick up your books prior to your first class meeting. More information regarding book orders and rentals can be found at [clovis.edu/bookstore](http://clovis.edu/bookstore).

## Textbooks are now more accessible and affordable!



Clovis Community College partners with Bibliu to offer an affordable and convenient option for all your textbooks through the Textbook Affordability Package (TAP). Textbook costs are automatically built into tuition at the time of registration. Students can simply stop by the bookstore and pick up books or have them shipped directly to their homes, by purchasing a shipping label through the bookstore webpage.

### TRADITIONAL TEXTBOOK AFFORDABILITY PACKAGE

This is a textbook rental package and it covers most general education courses. See [clovis.edu/bookstore](http://clovis.edu/bookstore) for a complete list of courses. Students will have the option to purchase the rentals at the end of the semester by paying the difference in rental and purchase cost plus a \$10 purchase fee.

Textbook costs are \$36 per credit hour, which includes textbooks\*\*, lab manuals, and access codes. This fee excludes lab kits or supplies such as dissection kits, art supplies, etc.

*\*\*Rentals must be returned at the end of the semester.*

### PROGRAMMATIC TEXTBOOK AFFORDABILITY PACKAGE

This is a package in which books are purchased as a bundle in order to offer a lower cost to students. See [clovis.edu/bookstore](http://clovis.edu/bookstore) for a complete list of programmatic textbook fees for the following programs:

- Automotive Technology
- Electrical Maintenance
- Emergency Medical Services (EMS)
- Industrial Technology
- Physical Therapist Assistant
- Nursing
- Radiologic Technology
- Welding

### OPTING OUT OF TAP

Students are opted into this program at the time of registration. Students who desire to opt out, can do that by accessing the Textbook (Bibliu) link in Canvas beginning the week prior to the start of class. Students who opt out are opting out of ALL courses for which they are registered that semester and are responsible for all textbook costs. Students must opt out each semester by the deadline in order to receive a full refund for the TAP fees. Textbooks will be available the week before classes start. Specific textbook and opt out information will be sent to student email each semester. It is the student's responsibility to check their student email often. Deadlines to opt out can be found on Page 2. For questions about opting out, please contact the bookstore personnel at [bookstore@clovis.edu](mailto:bookstore@clovis.edu) or [575.760.4050](tel:575.760.4050).

## CAMPUS TOURS & STUDENT ORIENTATION

Attending orientation is important in answering any questions you may have about your college career. Orientation topics include: student services; campus resources; meeting students and staff; and getting involved. Take advantage of this opportunity to meet other new students and take a campus tour with a member of the Student Ambassador program. If you are a first-time student, it is highly recommended you attend orientation. We are confident that CCC can help you establish a good start to a successful semester and help lay the foundation for your college career. If you have any questions about spring orientation, please contact the Admissions & Records Office by calling or texting [575.479.5006](tel:575.479.5006).

## CLASS CANCELLATIONS

Classes may be canceled for lack of enrollment or if an instructor is unavailable. Please login to your CCC student email via Pathway at [pathway.clovis.edu](http://pathway.clovis.edu) to see if any of your classes have been canceled. If so, please check the online schedule or see an Advisor to select an alternate class.

## CLASSROOM LOCATION

To view your classroom location online, login to Pathway at [pathway.clovis.edu](http://pathway.clovis.edu), click on the **Student Tab**, click on the **Student Detail Schedule** in the Student Quick Links box in the middle column, select your term, and then click **submit**.

Complete classroom locations and instructor listings will be posted at the main entrances of the campus during the first week of classes.

## NOTICE OF NON-DISCRIMINATION

Clovis Community College does not discriminate on the basis of race, color, national origin, ancestry, religion, sex, sexual orientation, spousal affiliation, gender identity, veteran status, physical or mental disability, serious medical condition, or age in its programs and activities. The following personnel have been designated to handle inquiries regarding the non-discrimination policies:

Director of Security  
417 Schepps Blvd. Clovis, NM 88101, Room 134  
[575.769.4144](tel:575.769.4144)

Director of Human Resource Services  
417 Schepps Blvd. Clovis, NM 88101, Room 112  
[575.769.4045](tel:575.769.4045)

Director of Diversity, Equity & Inclusion  
417 Schepps Blvd. Clovis, NM 88101, Room 138  
[575.769.4184](tel:575.769.4184)

For further information on notice of non-discrimination, visit [wdcrobcolp01.ed.gov/CFAPPS/OCR/contactus.cfm](http://wdcrobcolp01.ed.gov/CFAPPS/OCR/contactus.cfm) for the address and phone number of the office that serves your area, or call [1.800.421.3481](tel:1.800.421.3481).

## PARKING REGISTRATION

Clovis Community College encourages all students to register their vehicles with the Security Office in the Dr. H. A. Miller Student Services Center. You will need your license plate number along with the state of registration, make, model, year, and color of your vehicle to receive your free CCC decal.

## SPECIAL SERVICES & ACADEMIC CASE MANAGEMENT

Students who need assistance for a disability or disabling condition or who need help dealing with personal or educational issues can contact the Special Services Coordinator at [575.769.4121](tel:575.769.4121).

## STUDENT EMAIL

All CCC students will be issued an email address. After you are accepted for admission, you will receive a letter detailing login instructions. Student email is CCC's primary method of communication with students. Announcements sent to your email account will contain important information including important deadlines and academic progress; therefore, you should check your CCC email account frequently. Your instructors will also use this email address to contact you. For assistance logging in, call [575.769.4969](tel:575.769.4969).

## STUDENT ID CARD

You will need your student ID card to use resources in the Center for Student Success, Health and Fitness Center (gym), and the Library or to charge your books to your financial aid account in the Bookstore and to pick up financial aid and/or payroll checks. Your student ID card may also be required for identification upon request from Security staff. Your first student ID card is free. A \$10 replacement fee is required for lost cards and should be paid at the Business Office cashier's window.

Please bring your class schedule and a picture ID to the Security Office in the Dr. H. A. Miller Student Services Center to receive your student ID card.

## WITHDRAWING FROM CLASSES

If you withdraw from a class after the last day of late registration, the withdrawal will be recorded as "W" on your transcript. If you feel you will be unable to complete a course successfully, you must withdraw in order to avoid a failing grade for the course. You can withdraw online at [pathway.clovis.edu](http://pathway.clovis.edu) or complete a form in the Admissions and Records Office prior to the deadline. For more information, please contact the Admissions and Records office at [575.769.4025](tel:575.769.4025).

Please see the Academic Calendar at [clovis.edu/academiccalendar](http://clovis.edu/academiccalendar) for final withdrawal dates. Financial aid students should contact the Financial Aid office for information on how withdrawals may affect future financial aid. Withdrawing from a class is final and you cannot be reinstated.



## TUITION, FEES, & PAYMENT

Deadline to pay for Spring 2025 Semester is midnight on **January 10, 2025**. After that date, payment must be made the day of registration.

If payment or other financial arrangement is not made by the payment deadline, class registrations may be voided. It is the student's responsibility to drop classes through the Admissions Office if he or she does not plan to attend. Do not assume registration will automatically be voided for nonpayment. Students who are dropped for nonpayment are encouraged to re-register and make payment arrangements to secure their classes; however, your original class(es) may be closed, and you may have to choose alternate classes.

### TUITION AND FEES

Tuition charges are determined by residency status, the number of credit hours taken, and fees applicable to each course. See the following chart to calculate your tuition charges. Tuition and fees are subject to change due to legislative or Board of Trustee action.

#### Miscellaneous Fees

Student Fee*	\$40
Dishonored Check*	\$25
Graduation	
Certificate/Participating*	\$50
Diploma/Participating*	\$50
Diploma/Non-Participant*	\$15
Replacement diploma/certificate*	\$25
Electronic Diploma/Certificate*	\$5
Health and Fitness Center	
Swimming Pool Usage*	\$20
1-Day Pass*	\$5
5-Day Pass*	\$20
Hybrid Course Fee* (per course)	\$25
ID Card Replacement Fee*	\$10
Mixed Modality Fee* (per course)	\$25
Official Transcript Fee* (plus applicable shipping fees)	\$6
Online Course Fee* (per course)	\$50
Technology and Facilities Fee* (per credit hour)	\$15
Zoom Room Tech* (per credit hour)	\$4

\*Fees are non-refundable

Credit Hour	NM Resident In-District	NM Resident Out-of-District	Non-Resident	Senior Citizen $\diamond$	Technology & Facility Fee
1	48	59	121	5	15
2	96	118	242	10	30
3	144	177	363	15	45
4	192	236	484	20	60
5	240	295	605	25	75
6	288	354	726	30	90
7	336	413	847	35	105
8	384	472	968	40	120
9	432	531	1089	45	135
10	480	590	1210	50	150
11	528	649	1331		165
12	576	708	1452		180
13-18+	576	708	1452		180
19	624	767	1573		195
Each Additional Hour	48	59	121		15

$\ddagger$ You can enroll in 13- 18 credits for the same cost as 12 credit hours.  $\diamond$  Senior Citizens must register on or after **November 5, 2024** to be eligible for the reduced rate.

### RESIDENCY STATUS FOR TUITION PURPOSES

Tuition charges are determined by your residency status. The Admissions and Records Office classifies residency status for you when your completed application is received and processed. Residency is based on the following definitions:

**Resident In-District:** Students whose legal state of residency is New Mexico, who live within the boundaries of the Clovis Community College tax district, and who have lived in New Mexico for the past 12 consecutive months.

**Resident Out-of-District:** Students whose legal state of residency is New Mexico, and who have lived in New Mexico for the past 12 consecutive months, but who live outside of the Clovis Community College tax district.

Any Texas residents who reside within a 135-mile radius of CCC will be assessed in-state, out-of-district tuition.

**Non-Resident:** Students whose legal state of residency is not New Mexico or who have not lived in New Mexico for the past 12 consecutive months.

**Petitions for In-State Tuition Classification:** You must petition for changes to your residency status by completing a Petition for Resident Tuition Classification. This form is available in the Admissions and Records Office. All requirements must be met by **January 21, 2025** and documentation submitted to the Admissions and Records Office by **February 7, 2025**.

**Military Exemption:** Military personnel and their dependents qualify for in-state tuition rates. Contact the Admissions and Records Office at [575.769.4025](tel:575.769.4025) for assistance.

## FINANCIAL AID

Students eligible for financial aid who would like to charge their tuition and fees must set up a Pending Financial Aid Payment Plan (PFAPP), **even if their file is complete**. Students who withdraw before their financial aid checks are disbursed may lose their eligibility and may be responsible for payment of tuition, fees, books, and miscellaneous charges.

If you are using Financial Aid, please contact the Financial Aid Office prior to withdrawing. Withdrawing from a class is final and you cannot be reinstated. Contact the Admissions and Records Office at [575.769.4025](tel:575.769.4025) or email [admissions@clovis.edu](mailto:admissions@clovis.edu) if you need assistance.

Students with a PFAPP may charge books and supplies **January 11 - 31, 2025** (based on remaining eligibility).

Visit the Financial Aid Office or call [575.769.4060](tel:575.769.4060) or email [finaid@clovis.edu](mailto:finaid@clovis.edu) for more detailed information.

## SCHOLARSHIPS

CCC has many scholarships available, ranging from \$100 to \$1,000 per year. Students are encouraged to apply for scholarships to lessen the need for loans or part-time work to attend school. These scholarships are made possible by generous contributions to the College and CCC Foundation.

Apply online for dozens of CCC scholarships at [clovis.awardspring.com](http://clovis.awardspring.com).

## SENIOR CITIZEN DISCOUNT

Senior citizens may register beginning **November 5, 2024** and pay the reduced rate of \$5 per credit hour. Senior citizens who register prior to **November 5, 2024** are not eligible for the senior citizen discount. Qualifications for senior citizen discount:

- Must be 65 years of age by **February 7, 2025**
- Must be **classified as a** New Mexico resident
- Must enroll for **10 credit** hours or less during the semester

Senior citizen students must pay any course fees associated with classes. Senior citizens enrolled at CCC and who receive a reduction in tuition are entitled to all rights and privileges afforded all students.

## PAYMENT OPTIONS

**In-person:** Cash, money orders, checks (made payable to Clovis Community College), MasterCard, Visa, Discover, and American Express payments may be made at the cashier's window across from the Bookstore.

**By phone:** Phone in credit card information to [575.769.4132](tel:575.769.4132) or [575.769.4035](tel:575.769.4035).

**Online:** Login to **Pathway** at [pathway.clovis.edu](http://pathway.clovis.edu)

- Click on the **Student Tab**
- Click on **Pay Here** with TouchNet under Registration Tools

## Third-Party Sponsor:

If a third party (i.e., employer or government agency) is paying tuition and fees on a student's behalf, either the student or the third party must provide a copy of the authorization to the cashier at the time of registration.

## Deferred Payment Plan:

CCC offers a deferred payment plan administered by TouchNet Information Solutions. To initiate payment plan, login to Pathway at [pathway.clovis.edu](http://pathway.clovis.edu). Students must have a checking or credit card account to schedule and make payments, and students must be enrolled in at least three credit hours to take advantage of the payment plan. Students should initiate the contract and make initial payment at the time of registration to confirm their registration. Students are charged a non-refundable fee of \$10 to use the deferred payment plan.

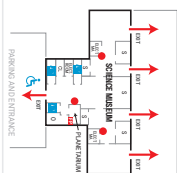
Consumer information for Clovis Community College, including our graduation rates, the median debt of students completing programs, and other important information, can be found at: [clovis.edu/consumerinfo](http://clovis.edu/consumerinfo).



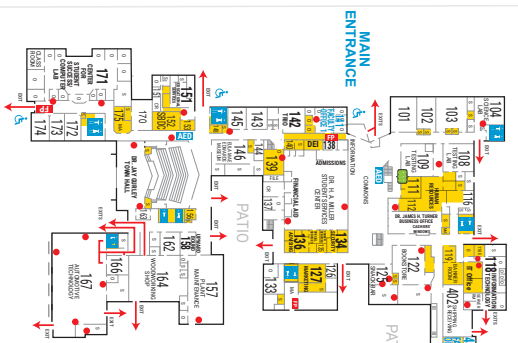
WALKING/JOGGING TRACK

ALLIED HEALTH AND LIBRARY

INTERACTIVE MUSEUM



CAMPUS MAIN BUILDING  
FIRST FLOOR



PARKING

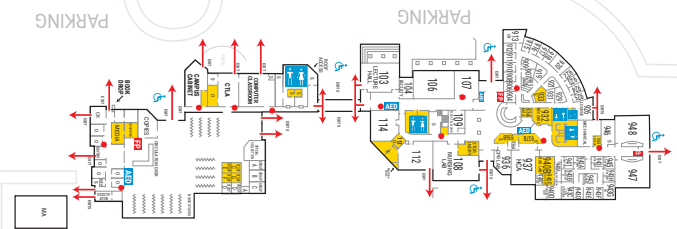
PARKING

CAMPUS MAIN BUILDING  
SECOND FLOOR



PARKING

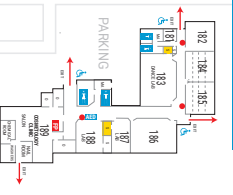
DR. W. D. DABBS  
LIBRARY



DON AND GUSTENIA BONNER  
NURSING EDUCATION BUILDING

JOE AND CHARLYNE SISLER  
ALLIED HEALTH BUILDING

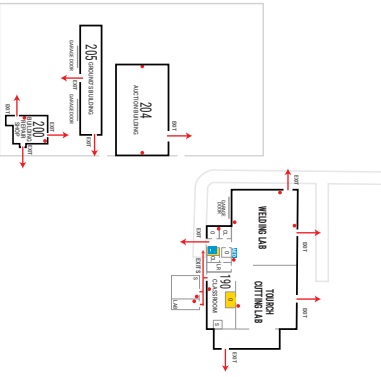
CLASSROOM SOUTH



PAINT BOOTH

TENNIS COURTS

COSMETOLOGY  
CLINIC



To US 60/84 - Mabry Drive

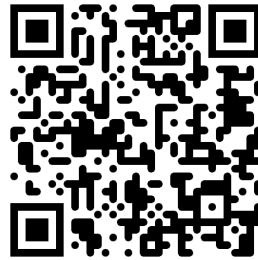


LEGEND





**Clovis Community College**™



ONLINE SCHEDULE

**REGISTER ONLINE:** [Clovis.edu/register](https://clovis.edu/register)

For list of course and program fees, visit [clovis.edu/fees](https://clovis.edu/fees)